

Description: • Bodies and trims manufactured from 316 stainless steel.

B Series - Ball valves - A-Lok® Ended



48 Parker DirectLink

Part number	Tube Outside Diameter	
	inch	mm
4A-B6LJ2-SSP	1/4	
6A-B6LJ2-SSP	3/8	
8A-B8LJ2-SSP	1/2	
M6A-B6LJ2-SSP		6
M10A-B6LJ2-SSP		10
M12A-B8LJ2-SSP		12

V Series - Needle valves - A-Lok® Ended



49 Parker DirectLink

Part number	Tube Outside Diameter	
	inch	mm
4A-V4LR-SS	1/4	
6A-V6LR-SS	3/8	
8A-V8LR-SS	1/2	
M6A-V4LR-SS		6
M10A-V6LR-SS		10
M12A-V8LR-SS		12

HNVS Series - Needle valves

6



50 Parker DirectLink

Part number	Thread
	NPTF
HNVS4FF	1/4
HNVS8FF	1/2

C Series - Check valves (25 psi cracking pressure)



51 Parker DirectLink

Part number	Tube Outside Diameter	
	inch	mm
4A-C4L-25-SS	1/4	
6A-C6L-25-SS	3/8	
8A-C8L-25-SS	1/2	
M6A-C4L-25-SS		6
M10A-C6L-25-SS		10
M12A-C8L-25-SS		12

Gauge valves



50 Parker DirectLink

Part number	Thread
	NPTF
HGVS8	1/2
HLS2V	1/2

Description:	<ul style="list-style-type: none"> • 2/2-Way Servo-Controlled Solenoid Valve - Magnalift Function - FKM - Normally Closed. • Coil IP65 for 2 P + E plug according to DIN 43650 type A (plug included). • Power Consumption 9W/14W (AC), 12W/16W (DC).
Temperature range:	<ul style="list-style-type: none"> • +140°C.
Seals Material:	<ul style="list-style-type: none"> • FKM.
Applications:	<ul style="list-style-type: none"> • Shut-off control (ON-OFF) of water, air, light oils (2°E) and inert gases in applications like thermo hydraulic systems, industrial washing machines, hydrocleaners, instruments, closed circuits.
Advantages:	<ul style="list-style-type: none"> • Superior flow rate thanks to the special diaphragm design which make this valve well performing with liquids, robust mechanical diaphragm hung system. • Special diaphragm design. • Robust mechanical diaphragm hung system.
Benefits:	<ul style="list-style-type: none"> • High performance with liquids. • Longer life.

123 Series - 2/2-Way Servo-Controlled Solenoid Valve - Magnalift Function - FKM - Normally Closed

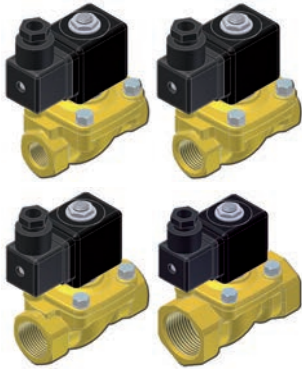


148 Parker DirectLink

Part number	Details	Thread Orifice		Voltage	Kv		Admissible Differential Pressure	
		BSP	mm		m³/h	l/mm	Min. bar	Max. bar
PS397109	123IV-ZB09-230/50-60-PG9	3/8	13	230V/50-60HZ	2.4	40	0	5
PS397131	123AV-ZB09-230/50-60-PG9	1/2	13	230V/50-60HZ	2.4	40	0	5
PS397119	123CV-JB14-230/50-60-PG9	3/4	20	230V/50-60HZ	6.0	100	0	3
PS397117	123DV-JB14-230/50-60-PG9	1	25	230V/50-60HZ	7.0	117	0	3
PS397107	123IV-ZB12-24DC-PG9	3/8	13	24V/DC	2.4	40	0	1
PS397111	123AV-ZB12-24DC-PG9	1/2	13	24V/DC	2.4	40	0	1
PS397115	123CV-JB16-24DC-PG9	3/4	20	24V/DC	6.0	100	0	1
PS397113	123DV-JB16-24DC-PG9	1	25	24V/DC	7.0	117	0	1
PS397129	123IV-ZB09-24/50-60-PG9	3/8	13	24V/50-60HZ	2.4	40	0	5
PS397134	123AV-ZB09-24/50-60-PG9	1/2	13	24V/50-60HZ	2.4	40	0	5
PS397136	123CV-JB14-24/50-60-PG9	3/4	20	24V/50-60HZ	6.0	100	0	3
PS397139	123DV-JB14-24/50-60-PG9	1	25	24V/50-60HZ	7.0	117	0	3
PS397133	123IV-ZB09-115/50-60-PG9	3/8	13	115V/50-60HZ	2.4	40	0	5
PS397135	123AV-ZB09-115/50-60-PG9	1/2	13	115V/50-60HZ	2.4	40	0	5
PS397137	123CV-JB14-115/50-60-PG9	3/4	20	115V/50-60HZ	6.0	100	0	3
PS397141	123DV-JB14-115/50-60-PG9	1	25	115V/50-60HZ	7.0	117	0	3

- Description:**
- 2/2-Way Servo-Controlled Solenoid Valve - Magnalift Function - NBR - Normally Closed.
 - Coil IP65 for 2 P + E plug according to DIN 43650 type A (plug included).
 - Power Consumption 8W (AC), 9W (DC).
- Temperature range:**
- +75°C Liquids / +100°C Air/Oil.
- Seals Material:**
- NBR.
- Applications:**
- Shut-off control (ON-OFF) of water, air and inert gases in applications like thermohydraulic systems, industrial washing machines, hydrocleaners, instruments, closed circuits.
- Advantages:**
- High pressure resistance.
 - Fast cycling.
 - Robust.
- Benefits:**
- High performing solution in highly demanding application.
 - Excellent performance in all other applications.
 - Long life expectancy.
 - Reliable repeatability.

**221 Series - 2/2-Way Servo-Controlled Solenoid Valve -
Magnalift Function - NBR - Normally Closed**



149 Parker DirectLink

Part number	Details	Thread BSPP	Orifice mm	Voltage	Kv m³/h	Admissible Differential Pressure	
						Min. bar	Max. bar
PS221001	221G13-2995-482635S6	3/8	15	230V/50-60HZ	3.9	0	16
PS221002	221G15-2995-482635S6	1/2	15	230V/50-60HZ	3.9	0	16
PS221003	221G16-2995-482635S6	3/4	15	230V/50-60HZ	4.8	0	16
PS221004	221G17-2995-482635S6	1	15	230V/50-60HZ	4.8	0	16
PS221005	221G1330-2995-482725C2	3/8	15	24V/DC	3.9	0	10
PS221006	221G1530-2995-482725C2	1/2	15	24V/DC	3.9	0	10
PS221007	221G1630-2995-482725C2	3/4	15	24V/DC	4.8	0	10
PS221008	221G1730-2995-482725C2	1	15	24V/DC	4.8	0	10
PS221009	221G13-2995-482725A2	3/8	15	24V/50HZ	3.9	0	16
PS221010	221G15-2995-482725A2	1/2	15	24V/50HZ	3.9	0	16
PS221011	221G16-2995-482725A2	3/4	15	24V/50HZ	4.8	0	16
PS221012	221G17-2995-482725A2	1	15	24V/50HZ	4.8	0	16
PS221013	221G13-2995-482635S5	3/8	15	110V/50-60HZ	3.9	0	16
PS221014	221G15-2995-482635S5	1/2	15	110V/50-60HZ	3.9	0	16
PS221015	221G16-2995-482635S5	3/4	15	110V/50-60HZ	4.8	0	16
PS221016	221G17-2995-482635S5	1	15	110V/50-60HZ	4.8	0	16

Description:	<ul style="list-style-type: none"> • 2/2-Way Servo-Controlled Solenoid Valve - Magnalift Function - FKM - Normally Closed. • Coil IP65 for 2 P + E plug according to DIN 43650 type A (plug included). • Power Consumption 8W (AC), 9W (DC).
Temperature range:	<ul style="list-style-type: none"> • +100°C.
Seals Material:	<ul style="list-style-type: none"> • FKM.
Applications:	<ul style="list-style-type: none"> • Shut-off control (ON-OFF) of water, air, light oils (2°E) and inert gases in applications like thermohydraulic systems, industrial washing machines, hydrocleaners, instruments, closed circuits.
Advantages:	<ul style="list-style-type: none"> • Robust and high performing solution for highly demanding application, excellent performance, long life expectancy, fast cycling, reliable repeatability, high pressure.
Benefits:	<ul style="list-style-type: none"> • Long life expectancy. • Fast cycling. • Reliable repeatability. • High pressure.

221 Series - 2/2-Way Servo-Controlled Solenoid Valve - Magnalift Function - FKM - Normally Closed



149 Parker DirectLink

Part number	Details	Thread Orifice		Voltage	Kv		Admissible Differential Pressure	
		BSP	mm		m³/h	l/mm	Min. bar	Max. bar
PS221017	221G23-2995-482635S6	3/8	15	230V/50-60HZ	3.9	65	0	16
PS221018	221G25-2995-482635S6	1/2	15	230V/50-60HZ	3.9	65	0	16
PS221019	221G26-2995-482635S6	3/4	15	230V/50-60HZ	4.8	80	0	16
PS221020	221G27-2995-482635S6	1	15	230V/50-60HZ	4.8	80	0	16
PS221021	221G2330-2995-482725C2	3/8	15	24V/DC	3.9	65	0	16
PS221022	221G2530-2995-482725C2	1/2	15	24V/DC	3.9	65	0	10
PS221023	221G2630-2995-482725C2	3/4	15	24V/DC	4.8	80	0	10
PS221024	221G2730-2995-482725C2	1	15	24V/DC	4.8	80	0	10
PS221025	221G23-2995-482725A2	3/8	15	24V/50HZ	3.9	65	0	10
PS221026	221G25-2995-482725A2	1/2	15	24V/50HZ	3.9	65	0	16
PS221027	221G26-2995-482725A2	3/4	15	24V/50HZ	4.8	80	0	16
PS221028	221G27-2995-482725A2	1	15	24V/50HZ	4.8	80	0	16
PS221029	221G23-2995-482635S5	3/8	15	110V/50-60HZ	3.9	65	0	16
PS221030	221G25-2995-482635S5	1/2	15	110V/50-60HZ	3.9	65	0	16
PS221031	221G26-2995-482635S5	3/4	15	110V/50-60HZ	4.8	80	0	16
PS221032	221G27-2995-482635S5	1	15	110V/50-60HZ	4.8	80	0	16

- Description:**
- 2/2-Way Direct Operated Valve - FKM - Normally Closed.
 - Coil IP65 for 2 P + E plug according to DIN 43650 type A (plug included).
 - Power Consumption 8W (AC), 9W (DC).
- Temperature range:**
- +140°C.
- Seals Material:**
- FKM.
- Applications:**
- Shut-off and control (ON-OFF) of water, air, light oils, steam and inert gases for temperatures up to 140°C.
 - Humidifiers, welding systems, industrial washing machines, automatic dispensers, espresso coffee machines, air dryers, diesel oil burners, sterilisers, compressors.
- Advantages:**
- Compact and robust design.
 - Can be used with a wide range of media.
- Benefits:**
- Reliability.
 - Reduction of references.

146 Series - 2/2-Way Direct Operated Valve - FKM - Normally Closed



148 Parker DirectLink

Part number	Details	Thread Orifice		Voltage	Kv		Admissible Differential Pressure	
		BSPP	mm		m ³ /h	l/mm	Min. bar	Max. bar
PS393548	146FV-ZB09-230/50-60-PG9	1/8	2.5	230V/50-60HZ	0.20	3.3	0	15
PS393549	146HV-ZB09-230/50-60-PG9	1/8	3.0	230V/50-60HZ	0.27	4.5	0	10
PS393550	146WV-ZB09-230/50-60-PG9	1/4	2.5	230V/50-60HZ	0.20	3.3	0	15
PS393551	146YV-ZB09-230/50-60-PG9	1/4	3.0	230V/50-60HZ	0.27	4.5	0	10
PS393552	146.3KV-ZB14-230/50-60-PG9	1/4	4.5	230V/50-60HZ	0.53	8.8	0	10
PS393553	146.3ABV-ZB14-230/50-60-PG9	1/4	6.0	230V/50-60HZ	0.75	12.5	0	8
PS393554	146FV-ZB12-24DC-PG9	1/8	2.5	24V/DC	0.20	3.3	0	12
PS393555	146HV-ZB12-24DC-PG9	1/8	3.0	24V/DC	0.27	4.5	0	8
PS393556	146WV-ZB12-24DC-PG9	1/4	2.5	24V/DC	0.20	3.3	0	12
PS393557	146YV-ZB12-24DC-PG9	1/4	3.0	24V/DC	0.27	4.5	0	8
PS393558	146.3KV-ZB16-24DC-PG9	1/4	4.5	24V/DC	0.53	8.8	0	3
PS393559	146.3ABV-ZB16 24DC-PG9	1/4	6.0	24V/DC	0.75	12.5	0	1
PS393527	146FV-ZB09 24/50-60-PG9	1/8	2.5	24V/50-60HZ	0.20	3.3	0	15
PS393528	146HV-ZB09 24/50-60-PG9	1/8	3.0	24V/50-60HZ	0.27	4.5	0	10
PS393529	146WV-ZB09 24/50-60-PG9	1/4	2.5	24V/50-60HZ	0.20	3.3	0	15
PS393580	146YV-ZB09 24/50-60-PG9	1/4	3.0	24V/50-60HZ	0.27	4.5	0	10
PS393581	146.3KV-ZB14 24/50-60-PG9	1/4	4.5	24V/50-60HZ	0.53	8.8	0	10
PS393582	146.3ABV-ZB14 24/50-60-PG9	1/4	6.0	24V/50-60HZ	0.75	12.5	0	8
PS393583	146FV-ZB09 115/50-60-PG9	1/8	2.5	115V/50-60HZ	0.20	3.3	0	15
PS393584	146HV-ZB09 115/50-60-PG9	1/8	3.0	115V/50-60HZ	0.27	4.5	0	10
PS393585	146WV-ZB09 115/50-60-PG9	1/4	2.5	115V/50-60HZ	0.20	3.3	0	15
PS393586	146YV-ZB09 115/50-60-PG9	1/4	3.0	115V/50-60HZ	0.27	4.5	0	10
PS393587	146.3KV-ZB09 115/50-60-PG9	1/4	4.5	115V/50-60HZ	0.53	8.8	0	10
PS393588	146.3ABV-ZB09 115/50-60-PG9	1/4	6.0	115V/50-60HZ	0.75	12.5	0	8



Description:	<ul style="list-style-type: none"> • 2/2-Way Direct Operated Valve - FKM - Normally Closed. • Coil IP65 for 2 P + E plug according to DIN 43650 type A (plug included). • Power Consumption 9W (AC), 10W (DC).
Temperature range:	<ul style="list-style-type: none"> • +140°C.
Seals Material:	<ul style="list-style-type: none"> • FKM.
Applications:	<ul style="list-style-type: none"> • Shut-off control (ON-OFF) of inert gases, light oils, fuel gases (131.4CG and 131.4GG variations). • Welding machines with controlled atmosphere, gas analysers, fumes analysers, distribution of light oils, measurement and control instruments, lubrication systems, diesel oil burners, gas cookers, portable hot air generators, dryers.
Advantages:	<ul style="list-style-type: none"> • Small, compact. • High reliability due to special plunger design.
Benefits:	<ul style="list-style-type: none"> • Small and Easy to install. • CG and GG versions can be used with natural gas (EN161).

131.4 Series - 2/2-Way Direct Operated Valve - FKM - Normally Closed



148 Parker DirectLink

Part number	Details	Thread Orifice		Voltage	Kv		Admissible Differential Pressure	
		BSPP	mm		m³/h	l/mm	Min. bar	Max. bar
PS390407	131.4BV KT09 230/50 PG9	1/8	2.8	230V/50-60HZ	0.17	2.9	0	8
PS390552	131.4FV KT09 230/50 PG9	1/4	2.8	230V/50-60HZ	0.17	2.9	0	8
PS390657	131.4GV KT09 230/50 PG9	1/4	4.0	230V/50-60HZ	0.32	5.3	0	2
PS390815	131.4CG KT09 230/50 PG9	1/8	4.0	230V/50-60HZ	0.32	5.3	0	2
PS390914	131.4GG KT09 230/50 PG9	1/4	4.0	230V/50-60HZ	0.32	5.3	0	2
PS390917	131.4GG KT10 24 DC PG9	1/8	4.0	24V/DC	0.32	5.3	0	1
PS390472	131.4BV KT10 24 DC PG9	1/4	2.8	24V/DC	0.17	2.9	0	6
PS390553	131.4FV KT10 24 DC PG9	1/4	2.8	24V/DC	0.17	2.9	0	6
PS390659	131.4GV KT10 24 DC PG9	1/8	4.0	24V/DC	0.32	5.3	0	1
PS390816	131.4CG KT10 24 DC PG9	1/4	4.0	24V/DC	0.32	5.3	0	1
PS390817	131.4GG KT09 24/50 PG9	1/8	4.0	24V/50-60HZ	0.32	5.3	0	8
PS390818	131.4BV KT09 24/50 PG9	1/4	2.8	24V/50-60HZ	0.17	2.9	0	8
PS390819	131.4FV KT09 24/50 PG9	1/4	2.8	24V/50-60HZ	0.17	2.9	0	2
PS390820	131.4GV KT09 24/50 PG9	1/8	4.0	24V/50-60HZ	0.32	5.3	0	2
PS390821	131.4CG KT09 24/50 PG9	1/4	4.0	24V/50-60HZ	0.32	5.3	0	2
PS390822	131.4GG KT09 115/50 PG9	1/8	4.0	115V/50-60HZ	0.32	5.3	0	8
PS390823	131.4BV KT09 115/50 PG9	1/4	2.8	115V/50-60HZ	0.17	5.3	0	8
PS390824	131.4FV KT09 115/50 PG9	1/4	2.8	115V/50-60HZ	0.17	2.9	0	2
PS390825	131.4GV KT09 115/50 PG9	1/8	4.0	115V/50-60HZ	0.32	2.9	0	2
PS390826	131.4CG KT09 115/50 PG9	1/4	4.0	115V/50-60HZ	0.32	5.3	0	2

- Description:**
- 3-Way Solenoid Valve - Direct Acting - FKM - Normally Closed.
 - Coil IP65 for 2 P + E plug according to DIN 43650 type A (plug included).
 - Power Consumption 9W (AC), 10W (DC).
- Temperature range:**
- +140°C.
- Seals Material:**
- FKM.
- Applications:**
- 141 series is used in applications which require actuation and automatic discharge of moving systems. Typical applications can be found in: sterilisers, espresso coffee machines, air compressors, Diesel oil burners, pilot valves, water treatment installations.
- Advantages:**
- Compact and robust design.
 - Can be used with a wide range of media.
- Benefits:**
- Reliability.
 - Reduction of references.

141 Series - 3-Way Solenoid Valve - Direct Acting - FKM - Normally Closed



148 Partner DirectLink

Part number	Details	Thread Orifice		Voltage	Kv		Admissible Differential Pressure	
		BSPP	mm		m ³ /h	l/mm	Min. bar	Max. bar
PS393540	141AV-ZB09-230/50-60-PG9	1/8	1.5	230V/50-60HZ	0.07	1.2	0	15
PS393541	141BV-ZB09-230/50-60-PG9	1/8	2 (2.5)*	230V/50-60HZ	0.12	2.0	0	10
PS393542	141FV-ZB09-230/50-60-PG9	1/4	2 (2.5)*	230V/50-60HZ	0.12	2.0	0	10
PS393543	141GV-ZB09-230/50-60-PG9	1/4	2.5	230V/50-60HZ	0.17	2.8	0	7
PS393544	141AV-ZB12-24DC-PG9	1/8	1.5	24V/DC	0.07	1.2	0	15
PS393545	141BV-ZB12-24DC-PG9	1/8	2 (2.5)*	24V/DC	0.12	2.0	0	10
PS393546	141FV-ZB12-24DC-PG9	1/4	2 (2.5)*	24V/DC	0.12	2.0	0	10
PS393547	141GV-ZB12-24DC-PG9	1/4	2.5	24V/DC	0.17	2.8	0	7
PS393519	141AV-ZB09 24/50-60-PG9	1/8	1.5	24V/50-60HZ	0.07	1.2	0	15
PS393520	141BV-ZB09 24/50-60-PG9	1/8	2 (2.5)*	24V/50-60HZ	0.12	2.0	0	10
PS393521	141FV-ZB09 24/50-60-PG9	1/4	2 (2.5)*	24V/50-60HZ	0.12	2.0	0	10
PS393522	141GV-ZB09 24/50-60-PG9	1/4	2.5	24V/50-60HZ	0.17	2.8	0	7
PS393523	141AV-ZB09 115/50-60-PG9	1/8	1.5	115V/50-60HZ	0.07	1.2	0	15
PS393524	141BV-ZB09 115/50-60-PG9	1/8	2 (2.5)*	115V/50-60HZ	0.12	2.0	0	10
PS393525	141FV-ZB09 115/50-60-PG9	1/4	2 (2.5)*	115V/50-60HZ	0.12	2.0	0	10
PS393526	141GV-ZB09 115/50-60-PG9	1/4	2.5	115V/50-60HZ	0.17	2.8	0	7

*Orifice mm for Exhaust side

Description:	<ul style="list-style-type: none"> • 2/2-Way Pilot Operated Valve - NBR - Normally Closed. • Coil IP65 for 2 P + E plug according to DIN 43650 type A (plug included). • Power Consumption 8W (AC), 9W (DC).
Temperature range:	<ul style="list-style-type: none"> • +90°C.
Seals Material:	<ul style="list-style-type: none"> • NBR.
Applications:	<ul style="list-style-type: none"> • Shut-off control (ON-OFF) of water, hot water (up to 90°C) in applications such as car washing installations, installations, autoclaves, plumbing, irrigation systems.
Advantages:	<ul style="list-style-type: none"> • Superior flow rate. • Special diaphragm design. • Robust mechanical diaphragm hung system.
Benefits:	<ul style="list-style-type: none"> • High performance with liquids. • Longer life.

7321B Series - 2/2-Way Pilot Operated Valve - NBR - Normally Closed



150 Parker DirectLink

Part number	Details	Thread/Orifice		Voltage	Kv		Admissible Differential Pressure	
		BSP	mm		m ³ /h	l/mm	Min. bar	Max. bar
PS475469W	7321BIN00-481865C2-PG9	3/8	13	24V DC	3.0	50	0.1	20
PS475428W	7321BAN00-481865C2-PG9	1/2	13	24V DC	3.0	50	0.1	20
PS475276W	7321BCN00-481865C2-PG9	3/4	20	24V DC	8.4	140	0.1	20
PS475470W	7321BDN00-481865C2-PG9	1	25	24V DC	9.6	160	0.1	20
PS475479W	7321BEN00-481865C2-PG9	1 1/4	35	24V DC	25.2	420	0.1	10
PS475432W	7321BFN00-481865C2-PG9	1 1/2	40	24V DC	30.0	500	0.1	10
PS475425W	7321BGN00-481865C2-PG9	2	50	24V DC	37.2	620	0.1	10
PS475243W	7321BIN00-4818653D-PG9	3/8	13	220-230/50-60	3.0	50	0.1	20
PS475251W	7321BAN00-4818653D-PG9	1/2	13	220-230/50-60	3.0	50	0.1	20
PS475261W	7321BCN00-4818653D-PG9	3/4	20	220-230/50-60	8.4	140	0.1	20
PS475267W	7321BDN00-4818653D-PG9	1	25	220-230/50-60	9.6	160	0.1	20
PS475366W	7321BEN00-4818653D-PG9	1 1/4	35	220-230/50-60	25.2	420	0.1	10
PS475369W	7321BFN00-4818653D-PG9	1 1/2	40	220-230/50-60	30.0	500	0.1	10
PS475372W	7321BGN00-4818653D-PG9	2	50	220-230/50-60	37.2	620	0.1	10
PS475406W	7321BIN00-481865A2-PG9	3/8	13	24/50-60	3.0	50	0.1	20
PS475407W	7321BAN00-481865A2-PG9	1/2	13	24/50-60	3.0	50	0.1	20
PS475408W	7321BCN00-481865A2-PG9	3/4	20	24/50-60	8.4	140	0.1	20
PS475500W	7321BDN00-481865A2-PG9	1	25	24/50-60	9.6	160	0.1	20
PS475501W	7321BEN00-481865A2-PG9	1 1/4	35	24/50-60	25.2	420	0.1	10
PS475502W	7321BFN00-481865A2-PG9	1 1/2	40	24/50-60	30.0	500	0.1	10
PS475503W	7321BGN00-481865A2-PG9	2	50	24/50-60	37.2	620	0.1	10
PS475538W	7321BIN00-483510S5-PG9	3/8	13	110-115/50 120/60	3.0	50	0.1	20
PS475539W	7321BAN00-483510S5-PG9	1/2	13	110-115/50 120/60	3.0	50	0.1	20
PS475540W	7321BCN00-483510S5-PG9	3/4	20	110-115/50 120/60	8.4	140	0.1	20
PS475541W	7321BDN00-483510S5-PG9	1	25	110-115/50 120/60	9.6	160	0.1	20
PS475542W	7321BEN00-483510S5-PG9	1 1/4	35	110-115/50 120/60	25.2	420	0.1	10
PS475543W	7321BFN00-483510S5-PG9	1 1/2	40	110-115/50 120/60	30.0	500	0.1	10
PS475544W	7321BGN00-483510S5-PG9	2	50	110-115/50 120/60	37.2	620	0.1	10

- Description:**
- 2/2-Way Pilot Operated Valve - EPDM - Normally Closed.
 - Coil IP65 for 2 P + E plug according to DIN 43650 type A (plug included).
 - Power Consumption 8W (AC), 9W (DC).
- Temperature range:**
- +140°C.
- Seals Material:**
- EPDM.
- Applications:**
- Shut-off control (ON-OFF) of water, superheated water and steam (up to 140°C) in applications such as washing machines, car washing installations, water treatment installations, autoclaves, plumbing, irrigation systems.
- Advantages:**
- Superior flow rate.
 - Special diaphragm design.
- Benefits:**
- High performance with liquids.
 - Longer life.

7321B Series - 2/2-Way Pilot Operated Valve - EPDM - Normally Closed



Part number	Details	Thread Orifice		Voltage	Kv		Admissible Differential Pressure	
		BSPP	mm		m³/h	l/mm	Min. bar	Max. bar
PS475504W	7321BIH00-481865C2-PG9	3/8	13	24V DC	3.0	50	0.1	10
PS475091W	7321BAH00-481865C2-PG9	1/2	13	24V DC	3.0	50	0.1	10
PS475505W	7321BCH00-481865C2-PG9	3/4	20	24V DC	8.4	140	0.1	10
PS475471W	7321BDH00-481865C2-PG9	1	25	24V DC	9.6	160	0.1	10
PS475506W	7321BEH00-481865C2-PG9	1 1/4	35	24V DC	25.2	420	0.1	10
PS475507W	7321BFH00-481865C2-PG9	1 1/2	40	24V DC	30.0	500	0.1	10
PS475508W	7321BGH00-481865C2-PG9	2	50	24V DC	37.2	620	0.1	10
PS475088W	7321BIH00-4818653D-PG9	3/8	13	220-230/50-60	3.0	50	0.1	10
PS475089W	7321BAH00-4818653D-PG9	1/2	13	220-230/50-60	3.0	50	0.1	10
PS475416W	7321BCH00-4818653D-PG9	3/4	20	220-230/50-60	8.4	140	0.1	10
PS475417W	7321BDH00-4818653D-PG9	1	25	220-230/50-60	9.6	160	0.1	10
PS475509W	7321BEH00-4818653D-PG9	1 1/4	35	220-230/50-60	25.2	420	0.1	10
PS475510W	7321BFH00-4818653D-PG9	1 1/2	40	220-230/50-60	30.0	500	0.1	10
PS475090W	7321BGH00-4818653D-PG9	2	50	220-230/50-60	37.2	620	0.1	10
PS475511W	7321BIH00-481865A2-PG9	3/8	13	24/50-60	3.0	50	0.1	10
PS475512W	7321BAH00-481865A2-PG9	1/2	13	24/50-60	3.0	50	0.1	10
PS475093W	7321BCH00-481865A2-PG9	3/4	20	24/50-60	8.4	140	0.1	10
PS475513W	7321BDH00-481865A2-PG9	1	25	24/50-60	9.6	160	0.1	10
PS475514W	7321BEH00-481865A2-PG9	1 1/4	35	24/50-60	25.2	420	0.1	10
PS475515W	7321BFH00-481865A2-PG9	1 1/2	40	24/50-60	30.0	500	0.1	10
PS475516W	7321BGH00-481865A2-PG9	2	50	24/50-60	37.2	620	0.1	10
PS475545W	7321BIH00-483510S5-PG9	3/8	13	110-115/50 120/60	3.0	50	0.1	10
PS475546W	7321BAH00-483510S5-PG9	1/2	13	110-115/50 120/60	3.0	50	0.1	10
PS475547W	7321BCH00-483510S5-PG9	3/4	20	110-115/50 120/60	8.4	140	0.1	10
PS475548W	7321BDH00-483510S5-PG9	1	25	110-115/50 120/60	9.6	160	0.1	10
PS475549W	7321BEH00-483510S5-PG9	1 1/4	35	110-115/50 120/60	25.2	420	0.1	10
PS475550W	7321BFH00-483510S5-PG9	1 1/2	40	110-115/50 120/60	30.0	500	0.1	10
PS475551W	7321BGH00-483510S5-PG9	2	50	110-115/50 120/60	37.2	620	0.1	10



150 Partner DirectLink

Description:

- 2/2-Way Pilot Operated Valve - FKM - Normally Closed.
- Coil IP65 for 2 P + E plug according to DIN 43650 type A (plug included).
- Power Consumption 8W (AC), 9W (DC).

Temperature range:

- +140°C.

Seals Material:

- FKM.

Applications:

- Shut-off control (ON-OFF) of Water and superheated water with contaminants, light oils (up to 140°C) in applications such as washing machines, car washing installations, water treatment installations, autoclaves, plumbing, irrigation systems.

Advantages:

- Superior flow rate.
- Special diaphragm design.

Benefits:

- High performance with liquids.
- Longer life.

7321B Series - 2/2-Way Pilot Operated Valve - FKM - Normally Closed



150 Parker DirectLink

Part number	Details	Thread Orifice		Voltage	Kv		Admissible Differential Pressure	
		BSPP	mm		m³/h	l/mm	Min. bar	Max. bar
PS475517W	7321BIV00-481865C2-PG9	3/8	13	24 V DC	3.0	50	0.1	20
PS475518W	7321BAV00-481865C2-PG9	1/2	13	24 V DC	3.0	50	0.1	20
PS475519W	7321BCV00-481865C2-PG9	3/4	20	24 V DC	8.4	140	0.1	20
PS475520W	7321BDV00-481865C2-PG9	1	25	24 V DC	9.6	160	0.1	20
PS475521W	7321BIV00-4818653D-PG9	3/8	13	220-230/50-60	3.0	50	0.1	20
PS475522W	7321BAV00-4818653D-PG9	1/2	13	220-230/50-60	3.0	50	0.1	20
PS475523W	7321BCV00-4818653D-PG9	3/4	20	220-230/50-60	8.4	140	0.1	20
PS475524W	7321BDV00-4818653D-PG9	1	25	220-230/50-60	9.6	160	0.1	20
PS475525W	7321BIV00-481865A2-PG9	3/8	13	24/50-60	3.0	50	0.1	20
PS475526W	7321BAV00-481865A2-PG9	1/2	13	24/50-60	3.0	50	0.1	20
PS475527W	7321BCV00-481865A2-PG9	3/4	20	24/50-60	8.4	140	0.1	20
PS475528W	7321BDV00-481865A2-PG9	1	25	24/50-60	9.6	160	0.1	20
PS475529W	7321BIV00-483510S5-PG9	3/8	13	110-115/50 120/60	3.0	50	0.1	20
PS475533W	7321BAV00-483510S5-PG9	1/2	13	110-115/50 120/60	3.0	50	0.1	20
PS475534W	7321BCV00-483510S5-PG9	3/4	20	110-115/50 120/60	8.4	140	0.1	20
PS475535W	7321BDV00-483510S5-PG9	1	25	110-115/50 120/60	9.6	160	0.1	20

- Description:**
- 2/2-Way Pilot Operated Valve - NBR - Normally Closed.
 - 2/2-Way Pilot Operated Valve - FKM - Normally Closed.
 - Coil IP65 for 2 P + E plug according to DIN 43650 type A (plug included).
 - Power Consumption 8W (AC), 9W (DC).
- Temperature range:**
- +75°C Liquids / +100°C Air/Oil.
- Seals Material:**
- NBR or FKM.
- Applications:**
- High Pressure shut-off control (ON-OFF) of dry or lubricated air, neutral gases and liquids/oil, in applications such as compressors, car washing, machine tool cooling, etc.
- Advantages:**
- Robust and reliable design to achieve long life durability with excellent repeatability at high pressure, normally closed or normally open function.
- Benefits:**
- Can work with dirty compressed air.

321H Series - 2/2-Way Pilot Operated Valve - NBR - Normally Closed

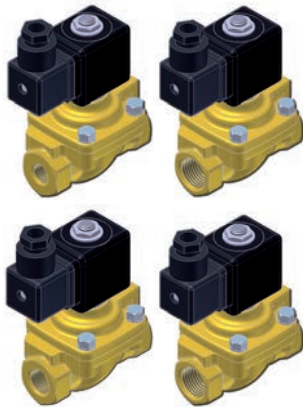


149 Parker DirectLink

Part number	Details	Thread Orifice		Voltage	Kv		Admissible Differential Pressure	
		BSP	mm		m ³ /h	l/mm	Min. bar	Max. bar
PS321001	E321H11-2995-482635S6	1/4	8.0	230V/50-60HZ	2.16	36	0.3	40
PS321002	E321H13-2995-482635S6	3/8	11.0	230V/50-60HZ	3.00	50	0.3	40
PS321003	E321H15-2995-482635S6	1/2	14.5	230V/50-60HZ	3.60	60	0.3	40
PS321004	E321H11-2995-482725C2	1/4	8.0	24V/DC	2.16	36	0.3	25
PS321005	E321H13-2995-482725C2	3/8	11.0	24V/DC	3.00	50	0.3	25
PS321006	E321H15-2995-482725C2	1/2	14.5	24V/DC	3.60	60	0.3	25
PS321007	E321H11-2995-482725A2	1/4	8.0	24V/50HZ	2.16	36	0.3	40
PS321008	E321H13-2995-482725A2	3/8	11.0	24V/50HZ	3.00	50	0.3	40
PS321009	E321H15-2995-482725A2	1/2	14.5	24V/50HZ	3.60	60	0.3	40
PS321010	E321H11-2995-482635S5	1/4	8.0	110V/50-60HZ	2.16	36	0.3	40
PS321011	E321H13-2995-482635S5	3/8	11.0	110V/50-60HZ	3.00	50	0.3	40
PS321012	E321H15-2995-482635S5	1/2	14.5	110V/50-60HZ	3.60	60	0.3	40

6

321H Series - 2/2-Way Pilot Operated Valve - FKM - Normally Closed



149 Parker DirectLink

Part number	Details	Thread Orifice		Voltage	Kv		Admissible Differential Pressure	
		BSP	mm		m ³ /h	l/mm	Min. bar	Max. bar
PS321013	E321H21-2995-482635S6	1/4	8.0	230V/50-60HZ	2.16	36	0.3	40
PS321014	E321H23-2995-482635S6	3/8	11.0	230V/50-60HZ	3.00	50	0.3	40
PS321015	E321H25-2995-482635S6	1/2	14.5	230V/50-60HZ	3.60	60	0.3	40
PS321016	E321H21-2995-482725C2	1/4	8.0	24V/DC	2.16	36	0.3	25
PS321017	E321H23-2995-482725C2	3/8	11.0	24V/DC	3.00	50	0.3	25
PS321018	E321H25-2995-482725C2	1/2	14.5	24V/DC	3.60	60	0.3	25
PS321019	E321H21-2995-482725A2	1/4	8.0	24V/50HZ	2.16	36	0.3	40
PS321020	E321H23-2995-482725A2	3/8	11.0	24V/50HZ	3.00	50	0.3	40
PS321021	E321H25-2995-482725A2	1/2	14.5	24V/50HZ	3.60	60	0.3	40
PS321022	E321H21-2995-482635S5	1/4	8.0	110V/50-60HZ	2.16	36	0.3	25
PS321023	E321H23-2995-482635S5	3/8	11.0	110V/50-60HZ	3.00	50	0.3	25
PS321024	E321H25-2995-482635S5	1/2	14.5	110V/50-60HZ	3.60	60	0.3	25

- Description:**
- 2/2-Way Pilot Operated Valve - NBR - Normally Open.
 - 2/2-Way Pilot Operated Valve - FKM - Normally Open.
 - Coil IP65 for 2 P + E plug according to DIN 43650 type A (plug included).
 - Power Consumption 8W (AC), 9W (DC).
- Temperature range:**
- +75°C/100°C NBR / +100°C FKM.
- Seals Material:**
- NBR or FKM.
- Applications:**
- High Pressure Shut-off control (ON-OFF) of dry or lubricated air, neutral gases and liquids/oil, in applications such as compressors, car washing, machine tool cooling, etc.
- Advantages:**
- Robust and reliable design to achieve long life durability with excellent repeatability at high pressure, normally closed or normally open function.
- Benefits:**
- Can work with dirty compressed air.

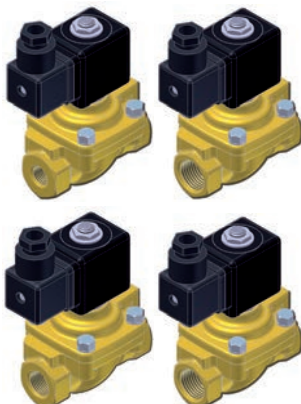
322H Series - 2/2-Way Pilot Operated Valve - NBR - Normally Open



149 Parker DirectLink

Part number	Details	Thread Orifice		Voltage	Kv		Admissible Differential Pressure	
		BSPP	mm		m³/h	l/mm	Min. bar	Max. bar
PS322001	322H71-2995-482635S6	1/4	8.0	230V/50-60HZ	2.16	36	0.3	40
PS322002	322H73-2995-482635S6	3/8	11.0	230V/50-60HZ	3.00	50	0.3	40
PS322003	322H75-2995-482635S6	1/2	14.5	230V/50-60HZ	3.60	60	0.3	40
PS322004	322H71-2995-482725C2	1/4	8.0	24V/DC	2.16	36	0.3	25
PS322005	322H73-2995-482725C2	3/8	11.0	24V/DC	3.00	50	0.3	25
PS322006	322H75-2995-482725C2	1/2	14.5	24V/DC	3.60	60	0.3	25
PS322007	322H71-2995-482725A2	1/4	8.0	24V/50HZ	2.16	36	0.3	40
PS322008	322H73-2995-482725A2	3/8	11.0	24V/50HZ	3.00	50	0.3	40
PS322009	322H75-2995-482725A2	1/2	14.5	24V/50HZ	3.60	60	0.3	40
PS322010	322H71-2995-482635S5	1/4	8.0	110V/50-60HZ	2.16	36	0.3	40
PS322011	322H73-2995-482635S5	3/8	11.0	110V/50-60HZ	3.00	50	0.3	40
PS322012	322H75-2995-482635S5	1/2	14.5	110V/50-60HZ	3.60	60	0.3	40

322H Series - 2/2-Way Pilot Operated Valve - FKM - Normally Open

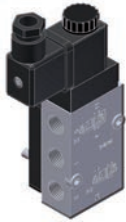


149 Parker DirectLink

Part number	Details	Thread Orifice		Voltage	Kv		Admissible Differential Pressure	
		BSPP	mm		m³/h	l/mm	Min. bar	Max. bar
PS322013	322H7106-2995-482635S6	1/4	8.0	230V/50-60HZ	2.16	36	0.3	40
PS322014	322H7306-2995-482635S6	3/8	11.0	230V/50-60HZ	3.00	50	0.3	40
PS322015	322H7506-2995-482635S6	1/2	14.5	230V/50-60HZ	3.60	60	0.3	40
PS322016	322H7106-2995-482725C2	1/4	8.0	24V/DC	2.16	36	0.3	25
PS322017	322H7306-2995-482725C2	3/8	11.0	24V/DC	3.00	50	0.3	25
PS322018	322H7506-2995-482725C2	1/2	14.5	24V/DC	3.60	60	0.3	25
PS322019	322H7106-2995-482725A2	1/4	8.0	24V/50HZ	2.16	36	0.3	40
PS322020	322H7306-2995-482725A2	3/8	11.0	24V/50HZ	3.00	50	0.3	40
PS322021	322H7506-2995-482725A2	1/2	14.5	24V/50HZ	3.60	60	0.3	40
PS322022	322H7106-2995-482635S5	1/4	8.0	110V/50-60HZ	2.16	36	0.3	40
PS322023	322H7306-2995-482635S5	3/8	11.0	110V/50-60HZ	3.00	50	0.3	40
PS322024	322H7506-2995-482635S5	1/2	14.5	110V/50-60HZ	3.60	60	0.3	40

- | | |
|---------------------------|--|
| Description: | <ul style="list-style-type: none"> • 3/2 + 5/2 Way Solenoid Valve - Pilot Operated - NBR - NAMUR Interface. • Coil IP65 for 2 P + E plug according to DIN 43650 type B (plug included). • Power Consumption 3W. |
| Temperature range: | <ul style="list-style-type: none"> • +50°C. |
| Seals Material: | <ul style="list-style-type: none"> • NBR. |
| Applications: | <ul style="list-style-type: none"> • 3 or 4 way directional valves for the control of single or double acting pneumatic actuators with NAMUR standard and following the VDI/VDE 3845 recommendations. |
| Advantages: | <ul style="list-style-type: none"> • Highly reliable design offering millions of cycles life time duration with excellent value for money. |
| Benefits: | <ul style="list-style-type: none"> • Can be mounted on rack and pinion or scotch and yoke NAMUR actuators. |

341N05 Series - 3/2 + 5/2 Way Solenoid Valve - Pilot Operated - NBR - NAMUR Interface



151 Parker DirectLink

Part number	Details	Thread BSPP	Orifice mm	Voltage	Kv		Admissible Differential Pressure		Media
					m ³ /h	l/mm	Min. bar	Max. bar	
PS341001	341N05-496482-P9	1/4	7	230V/50-60HZ	75	1250	2.5	10	Air
PS341002	341N05-496482-P2	1/4	7	110/50-60HZ	75	1250	2.5	10	Air
PS341003	341N05-496482-P0	1/4	7	24/50-60HZ	75	1250	2.5	10	Air
PS341004	341N05-496482-C2	1/4	7	24V/DC	75	1250	2.5	10	Air

- | | |
|--------------------|---|
| Description: | <ul style="list-style-type: none"> • 2/2-Way Pilot Operated Valve - NBR - Normally Open. • Coil IP65 for 2 P + E plug according to DIN 43650 type A (plug included). • Power Consumption 8W (AC), 9W (DC). |
| Temperature range: | <ul style="list-style-type: none"> • +90°C. |
| Seals Material: | <ul style="list-style-type: none"> • NBR. |
| Applications: | <ul style="list-style-type: none"> • Shut-off control (ON-OFF) of water, superheated water and steam (up to 140°C) in applications such as washing machines, car washing installations, water treatment installations, autoclaves, plumbing, irrigation systems. |
| Advantages: | <ul style="list-style-type: none"> • Superior flow rate thanks to the special diaphragm design, best performances for minimum and maximum operating pressure differential. |

7322B Series - 2/2-Way Pilot Operated Valve - NBR - Normally open



Part number	Details	Thread Orifice		Voltage	Kv		Admissible Differential Pressure	
		BSPP	mm		m ³ /h	l/mm	Min. bar	Max. bar
PS475600W	7322BIN00-481865C2-PG9	3/8	13	24V DC	3.0	50	0.1	20
PS475601W	7322BAN00-481865C2-PG9	1/2	13	24V DC	3.0	50	0.1	20
PS475602W	7322BCN00-481865C2-PG9	3/4	20	24V DC	8.4	140	0.1	20
PS475603W	7322BDN00-481865C2-PG9	1	25	24V DC	9.6	160	0.1	20
PS475604W	7322BIN00-4818653D-PG9	3/8	13	220-230/50-60	3.0	50	0.1	20
PS475605W	7322BAN00-4818653D-PG9	1/2	13	220-230/50-60	3.0	50	0.1	20
PS475606W	7322BCN00-4818653D-PG9	3/4	20	220-230/50-60	8.4	140	0.1	20
PS475607W	7322BDN00-4818653D-PG9	1	25	220-230/50-60	9.6	160	0.1	20
PS475608W	7322BIN00-481865A2-PG9	3/8	13	24/50-60	3.0	50	0.1	20
PS475609W	7322BAN00-481865A2-PG9	1/2	13	24/50-60	3.0	50	0.1	20
PS475610W	7322BCN00-481865A2-PG9	3/4	20	24/50-60	8.4	140	0.1	20
PS475611W	7322BDN00-481865A2-PG9	1	25	24/50-60	9.6	160	0.1	20
PS475612W	7322BIN00-483510S5-PG9	3/8	13	110-115/50 120/60	3.0	50	0.1	20
PS475613W	7322BAN00-483510S5-PG9	1/2	13	110-115/50 120/60	3.0	50	0.1	20
PS475614W	7322BCN00-483510S5-PG9	3/4	20	110-115/50 120/60	8.4	140	0.1	20
PS475615W	7322BDN00-483510S5-PG9	1	25	110-115/50 120/60	9.6	160	0.1	20

150 Parker DirectLink